


Wi-Fi Function User Manual



This description is applied to Air Conditioners with Wi-Fi function. Please read the manual carefully before using the product and keep it for future reference.

A decorative footer at the bottom of the page featuring a wavy, metallic, geometric pattern.

Wi-Fi App INSTRUCTION MANUAL

Please scan the QR code to download the latest App software for integrated air conditioners, dehumidifiers and portable air conditioners.



iOS



Android

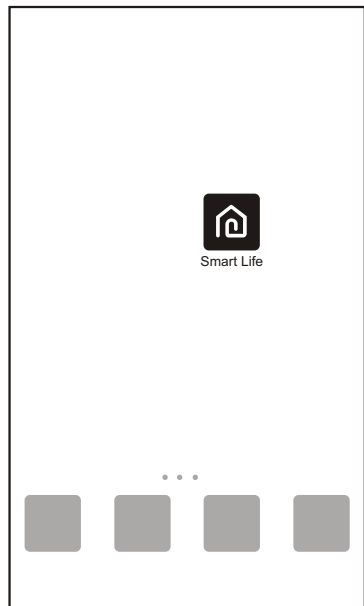
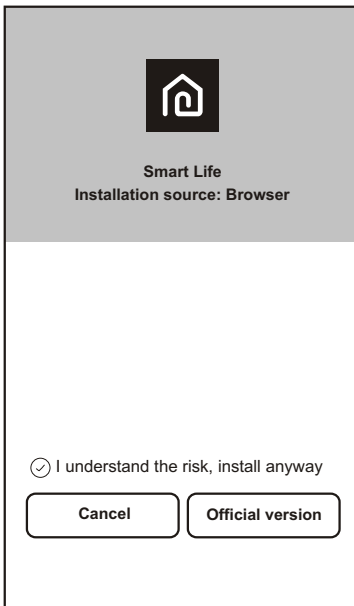


SERVICE CONDITION

Thank you for choosing a TCL air conditioner. This manual applies to air conditioners which have Wi-Fi functionality. Please read the manual carefully before using the product and keep it for further review. Please do not unplug the Wi-Fi module by yourself. Because of technical updates, there may be deviation from the information within this manual. We apologize for any issues.

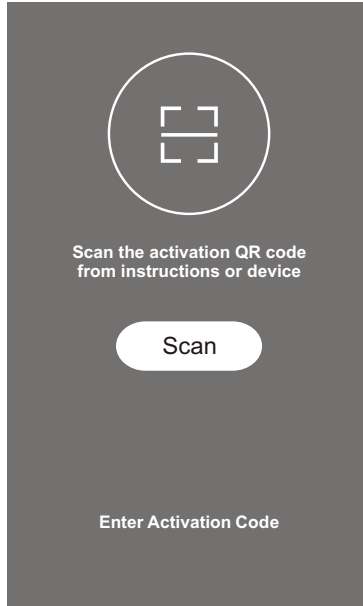
INSTALL THE App

When download the App software, you can install the App software on your smart phone. After installation, you will find the "Smart Life" icon on your phone's home screen.

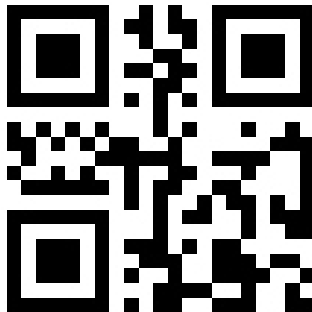


ACTIVATE QR CODE

1. The first time you enter the App after download, an activation screen will appear. Scan the activation QR code (click the "Scan" button and scan the QR code in the page below) or type in the activation code below. Click the "activate" button to continue.



2. Air conditioner activation QR code



3. Air conditioner activation code: TCL

REGISTER USER ACCOUNT

Once you download the App, you will need to create an account.
Click the "Register" button to enter the registration process.
You can register with your email address or mobile phone number.

The first screenshot shows the app's main screen with the Smart Life logo and two buttons: "Log in" and "Register".

The second screenshot shows the "Register" screen with a "Back" button, an "E-mail" input field, a "Next" button, and a link "or Register with Mobile number>".

The third screenshot shows the "Register" screen with a "Back" button, a country selection dropdown (USA +01 >), a "Mobile number" input field, and a "Next" button.

LOGIN USER ACCOUNT

1. Once you have registered and created an account, click the "Login" button.
2. For phone number login, press the "Sign In with SMS" button to enter the login screen. Type in your phone number and press "Get" to receive a verification code. Once the verification code is received, type it in the login screen and press "Login".

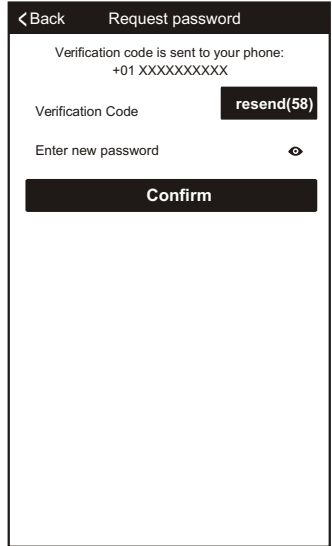
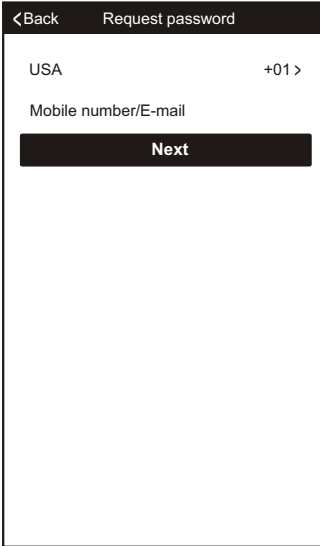
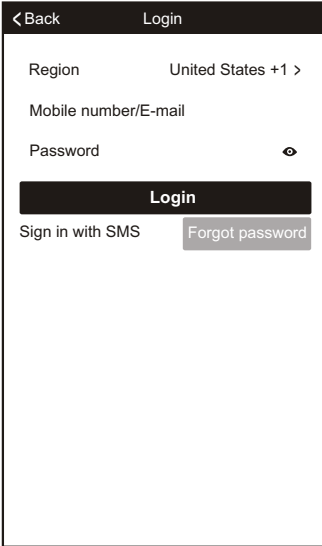
The first screenshot shows the "Login" screen with a "Back" button, a country selection dropdown (USA +01 >), a "Mobile number/E-mail" input field, a "Password" input field with a visibility toggle, a "Login" button, and two links: "Sign in with SMS" and "Forgot password".

The second screenshot shows the "SMS verify and sign in" screen with a "Cancel" button, a country selection dropdown (USA +01 >), a "Phone Number" input field, a "Verification Code" input field, a "Get" button, and a "Login" button.

FORGOT PASSWORD

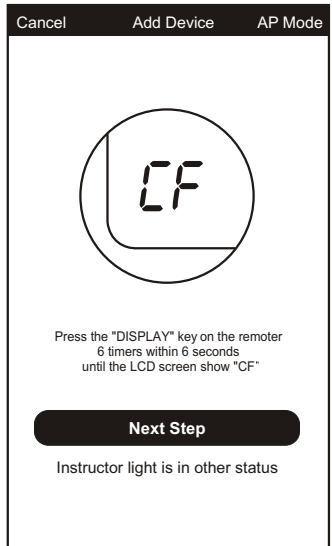
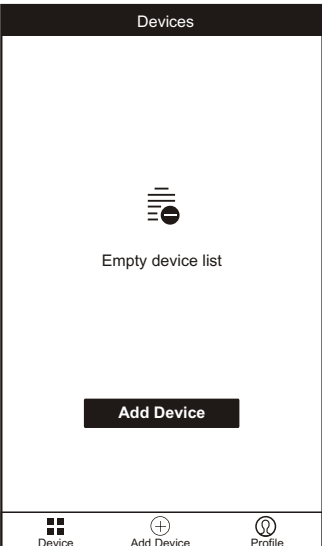
If you forget your password you can retrieve it by following these instructions:

1. Press the "Forgot password" button to enter the next page.
2. Type in the registered phone number or email address and press the "Next" button to continue.
3. You will receive a verification code to continue. Type in the code received and set a new password. Press the "Confirm" button to finish.



ADD YOUR DEVICE

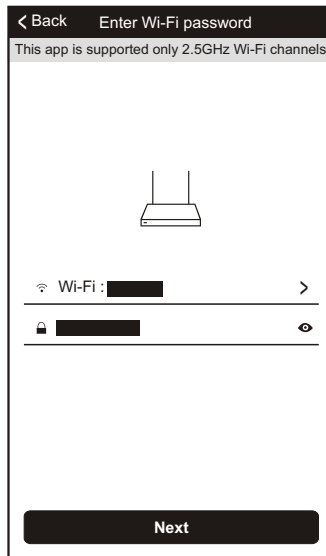
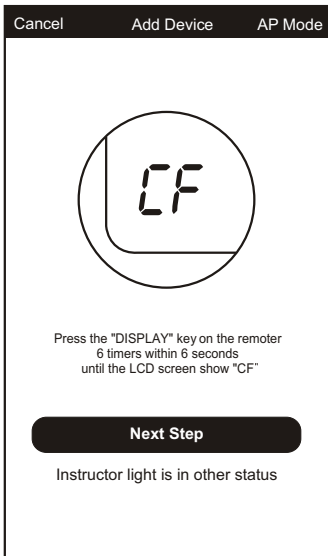
1. Press the "Add Device" and click the type of product you are connecting.
2. There are two methods to do a device match, "CF" or "AP" mode.



ADD THE DEVICE(CF MODE)

1.The system defaults to CF mode,Press"Next Step"to continue.

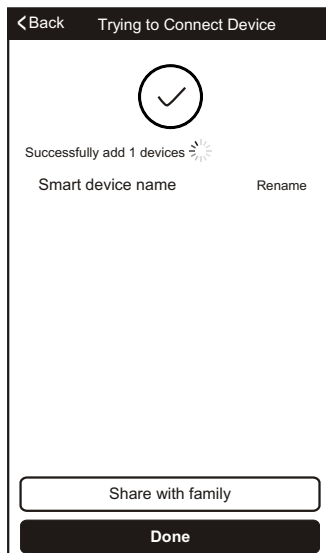
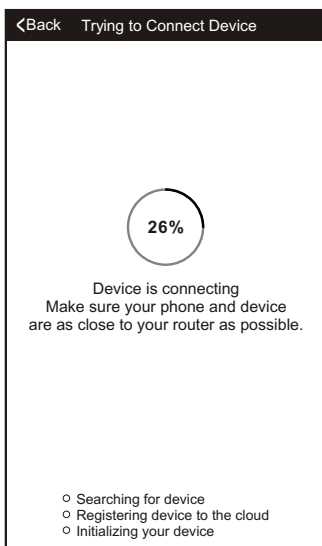
2.select the home router,and fulfill the password of router,press"Next"to continue.



3.The App will automatically do the device match.

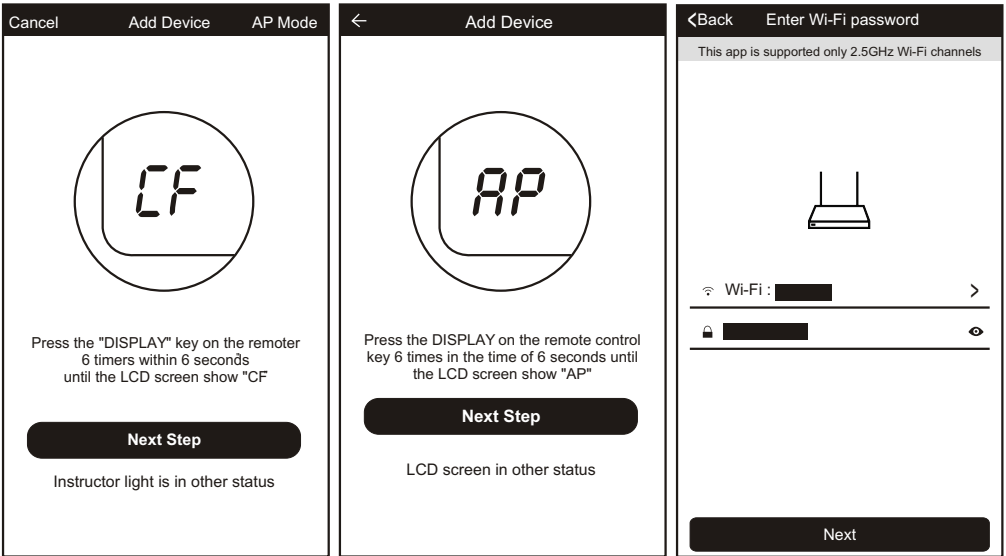
4.After a match is found, you will be prompted with the below screens.

5.You can rename your smart phone device or share it with family.Press "Done" to start controlling the device.

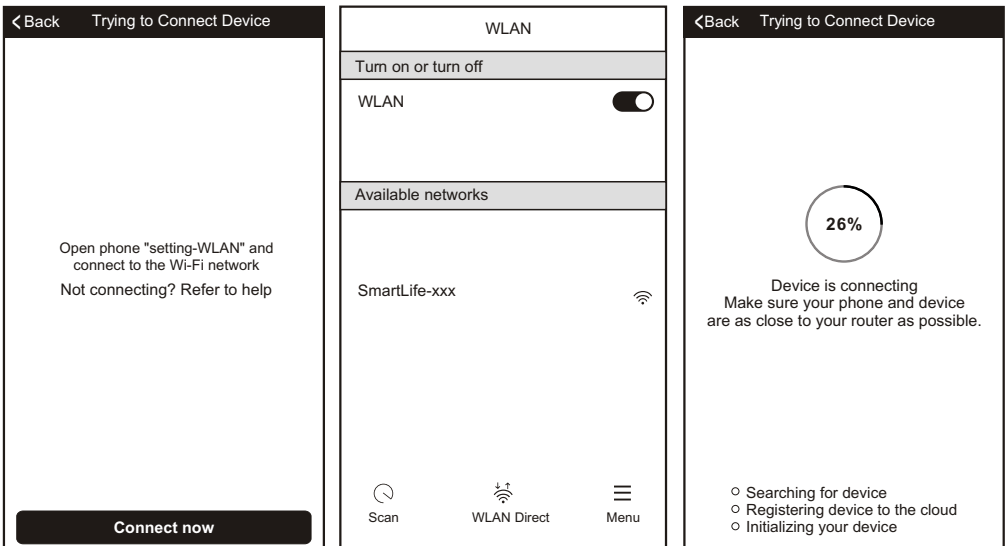


ADD THE DEVICE(AP MODE)

1. Click the "AP Mode" to the "AP" page. Press "Next Step" to continue.
2. Select the home router, type in the password and press "Next" to continue.

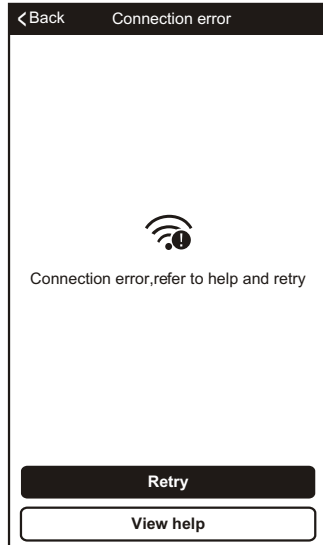


3. Select the AC Device named "SmartLife-xxx" on the WLAN screen. The App will automatically match the device.



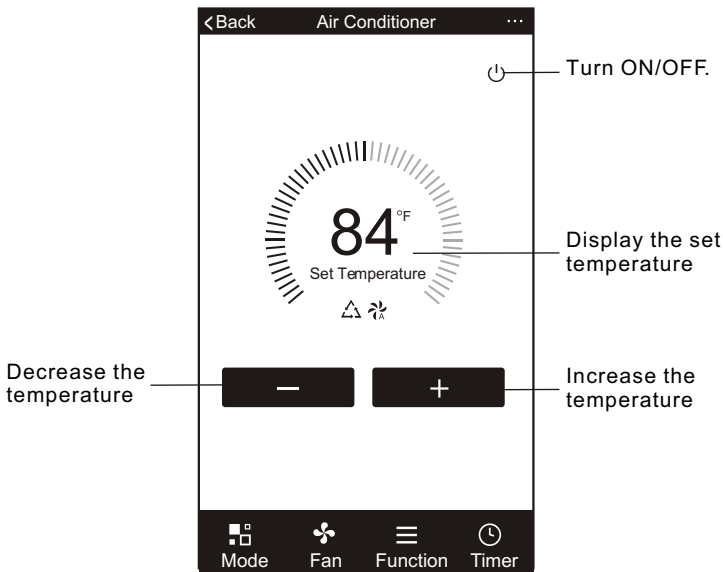
4. After the match is successful, the page will display the prompt as below.

5. If the match fails, the App will display a warning. Press "Retry" to try the connection again.



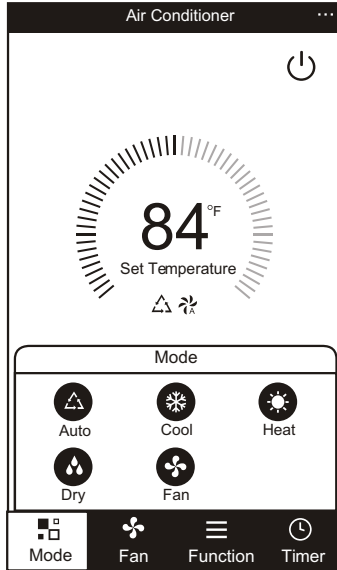
AIR CONDITIONER CONTROL

1. Click the air conditioner name to enter the control panel. Click the ON/OFF button to adjust the settings.

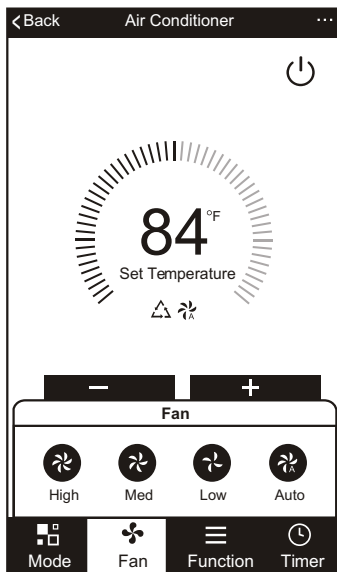


*Because of technical updates, there may be deviation from the information within this manual. We apologize for any issues.

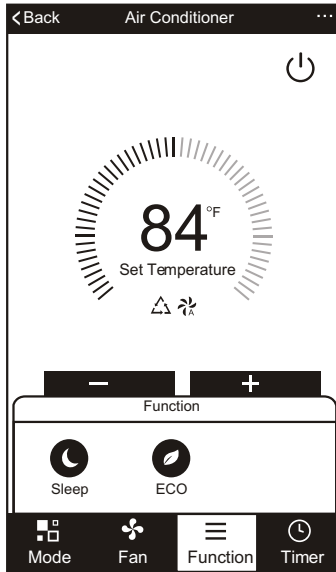
2. Adjust the settings to the operating mode you want to use: Cool, Heat, Dry, Fan, Auto. Click the "Mode" button and choose the mode you would like. Some units are cooling only; the "Heat" mode will not function. In "Dry" mode, the App temperature display may differ from the unit display because of the fast changes in temperature.



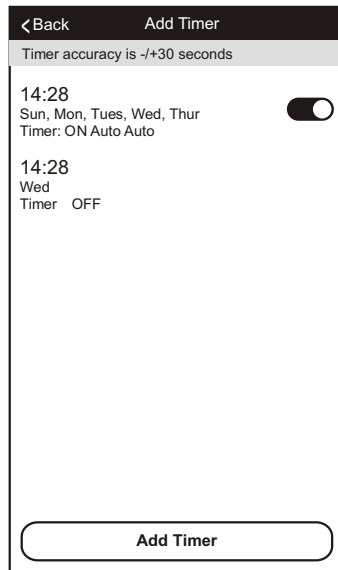
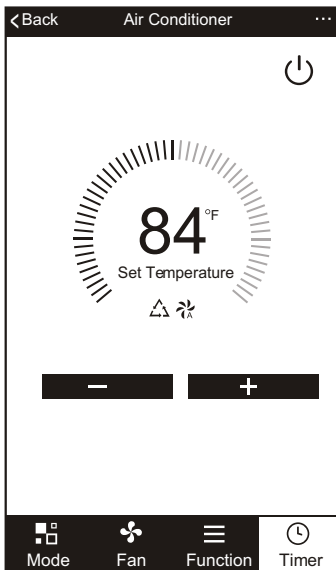
3. For Fan mode, click the "Fan" button and choose the speed you want: Low, Med, High, Auto.



4. Other unit controls can be changed by selecting the "Function" button. Here you select the Sleep or Eco modes. In Sleep mode, the fan speed will set to low.



5. To set the Timer function: Click the "Timer" button. The APP will enter the timer setting interface. It will display the task scheduler that was previously set. You can press to edit the timer or create a new timer by clicking the "Add Timer" button.



6. Click "ON" or "OFF" button to set Timer ON or Timer OFF.
 You can set the: Hour, Minute, Operate Mode, Operate Fan Speed, Operate Temperature. You can also set a weekly timer.
 After you're finished setting the timer, click the button to Cancel or Confirm.

Timer cancel

Hour setting

Mode setting

Fan Speed setting

Temperature setting

Timer submit

Minute setting

Weekly setting

Timer ON/OFF setting

7. More Options- From the upper, right-hand corner, you can view or change the following options: Modify Device Name, Device Sharing, Device Info, Feedback, Check for Updates, Remove the Device or Restore Defaults.

8. Profile. You can manage your personal information. It includes:

a, Account information.

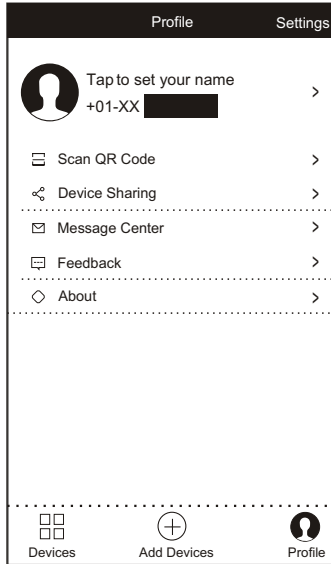
b, Scan QR code: Developers could preview the control interface.

c, Share Device: Display users device sharing information.

d, Message Center: Displays all messages that system sent to users.

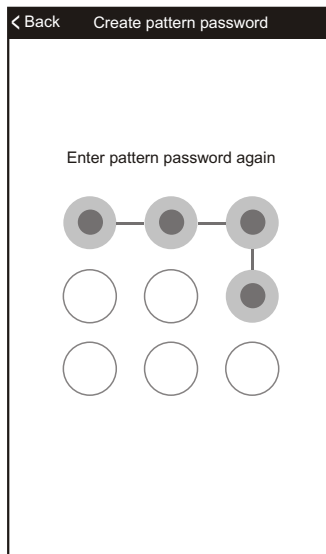
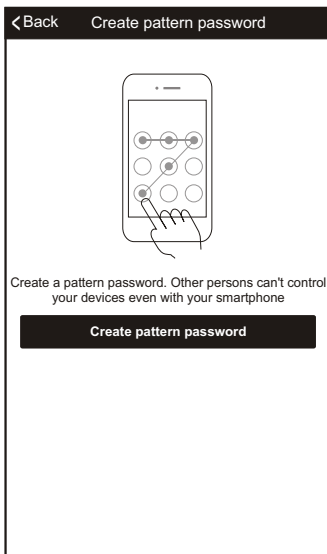
e, Feedback: Where users could submit feedback online.

f, About: Displays the current App version information.



9. Pattern lock. Tap "Pattern lock" to set up your App unlock pattern.

After it is enabled, you need to draw the pattern to unlock the App.



TROUBLE SHOOTING

Description	Analysis
Air conditioner can't be configured successfully	<ol style="list-style-type: none">1. That the mobile connected Wi-Fi address and password is correct;2. Check the air conditioner under configuration status;3. There are firewall or other restrictions have been set or not;4. Check that the router works normally;5. Make sure air conditioner, router and mobile phone work within the signal scope;6. Check if the router is shielding the App.
Mobile can't control air conditioner	<p>Software display: Identification failed- This means that the air conditioner has been reset and the mobile phone lost its control permission. You will need to connect the Wi-Fi to get permission again. Please connect to the local network and refresh. If it still does not work, please delete the air conditioner in the App and try again.</p>
Mobile can't find air conditioner	<p>Software display: Air conditioner is offline. Please check network status.</p> <ol style="list-style-type: none">1.The air conditioner has been reconfigured;2.No power to the air conditioner;3.No power to the router;4. Air conditioner can't connect to router;5. Air conditioner can't connect to network through the router(under remote control mode);6. Mobile can't connect to router(Under local control mode);7. The mobile phone can't connect to network (under remote control mode).

